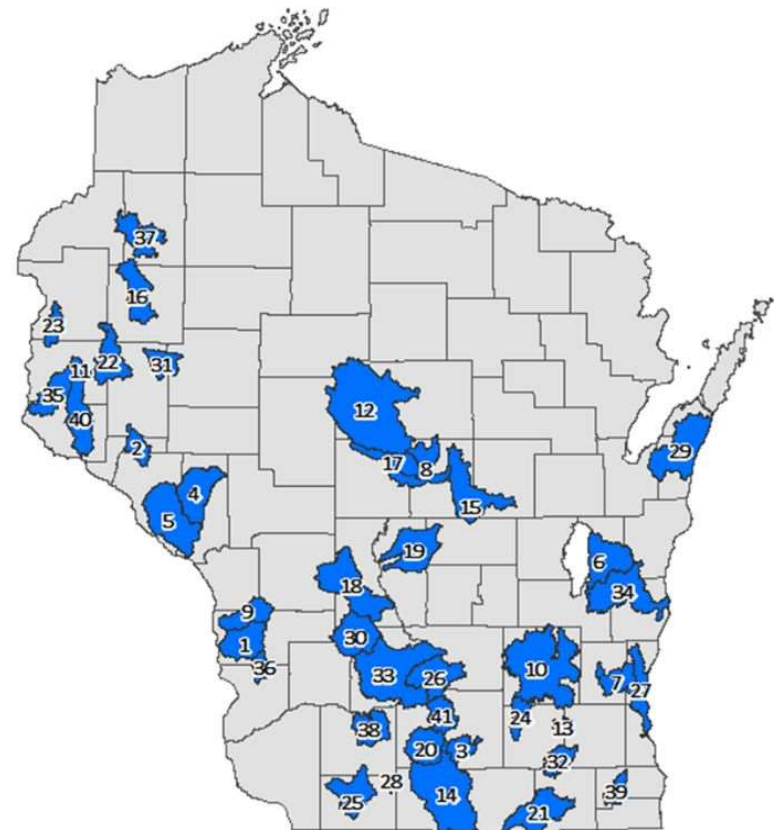


# What's shakin' on the Wisconsin River?

- ▶ PLW's
- ▶ NPS/CI project/Marathon County
- ▶ Flows/FERC/WLA
- ▶ AIS
- ▶ Nutrient reduction in cranberry bogs
- ▶ Other stuff we don't have time for
- ▶ And what's up with you?

# Producer Led Watersheds

- Producers with agency **assistance** (i.e. grants & collaboration)
- Producers talking to producers
- Boots on the ground to implement WQ BMP's
- Need more with capacity to implement

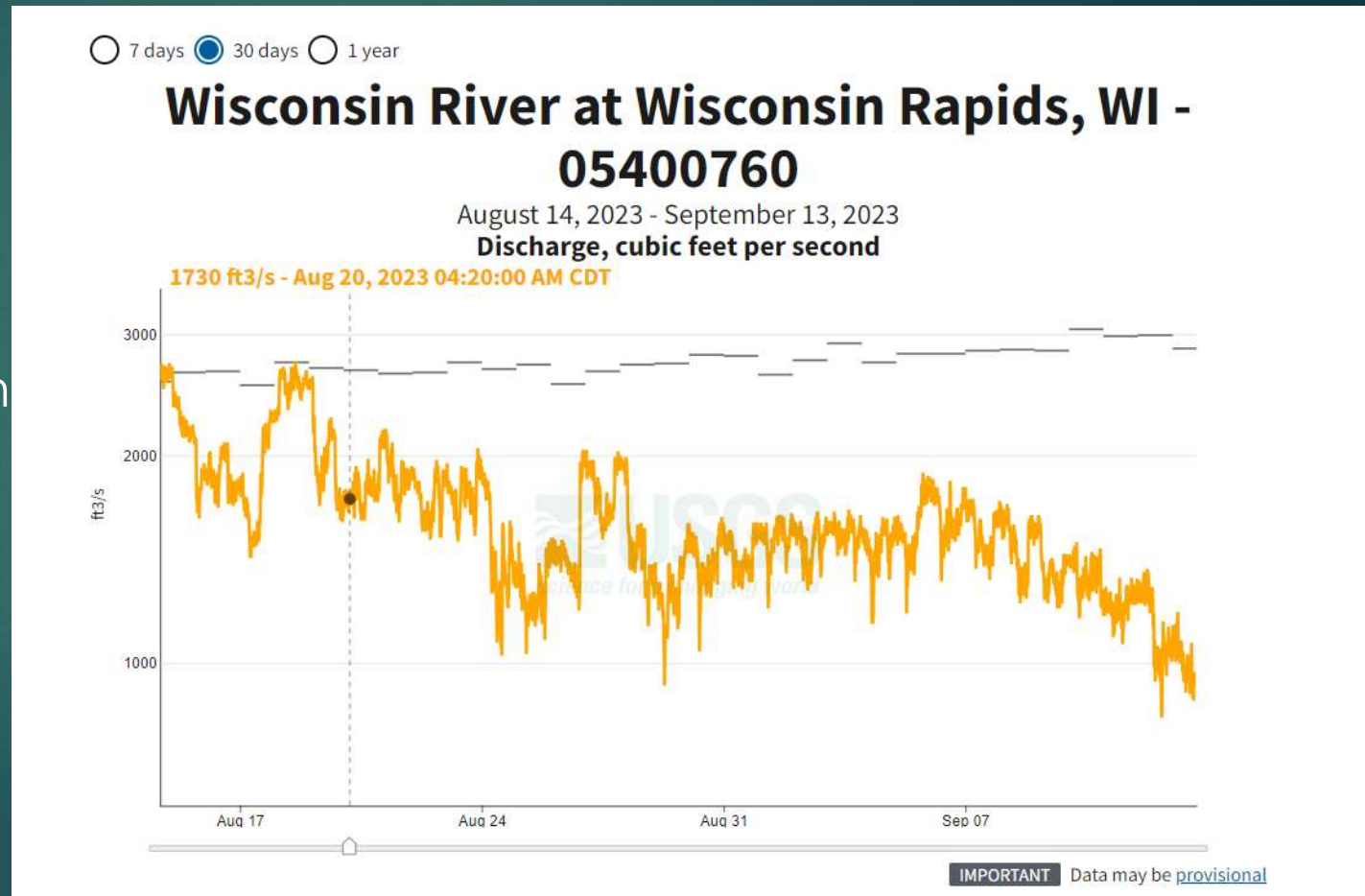


# NPS: Chloride Sampling of Mill Creek

- Friends of Mill Creek - Salt Watch
- DNR wrote project to monitor tribs and identify sources
- Currently sampling
- Identified major sources
- Need to work with SW and City of Marshfield

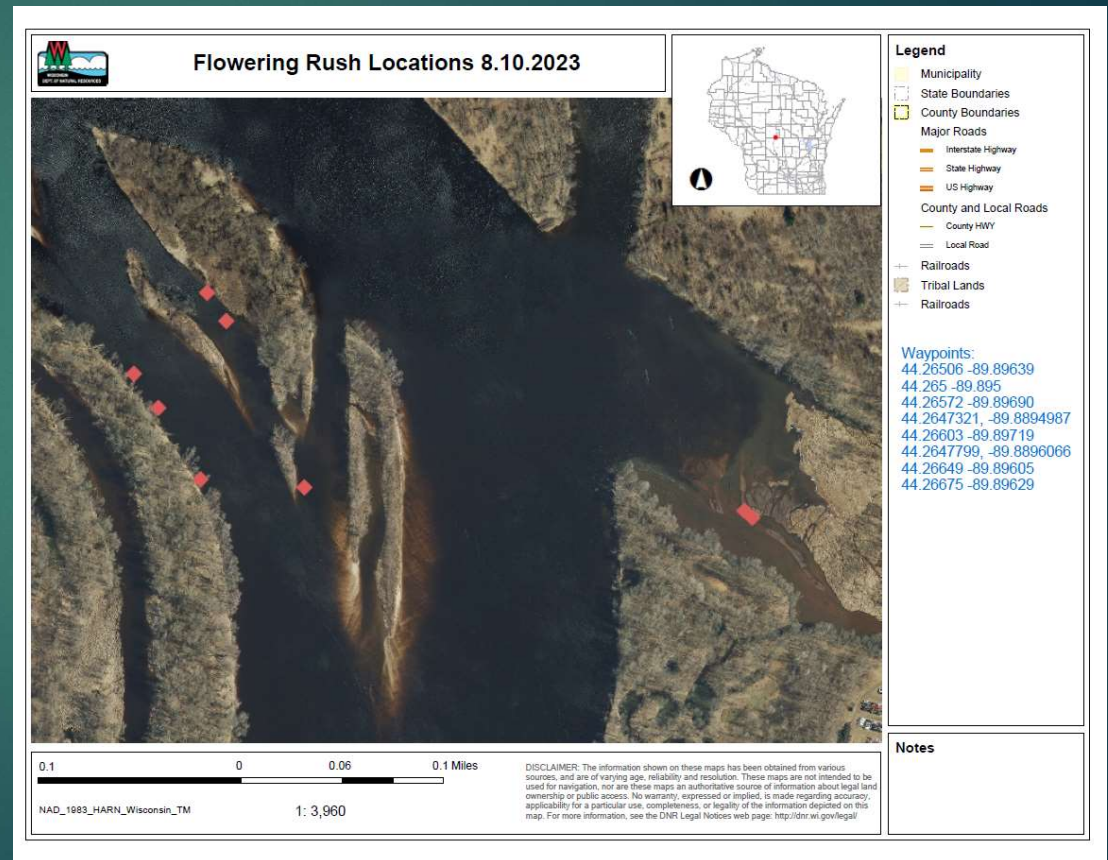
# Flows, FERC and WLA

- Very low flows
- Triggers FERC license actions
- WVIC, DNR, FERC
- Waste Load Allocation (D.O.)

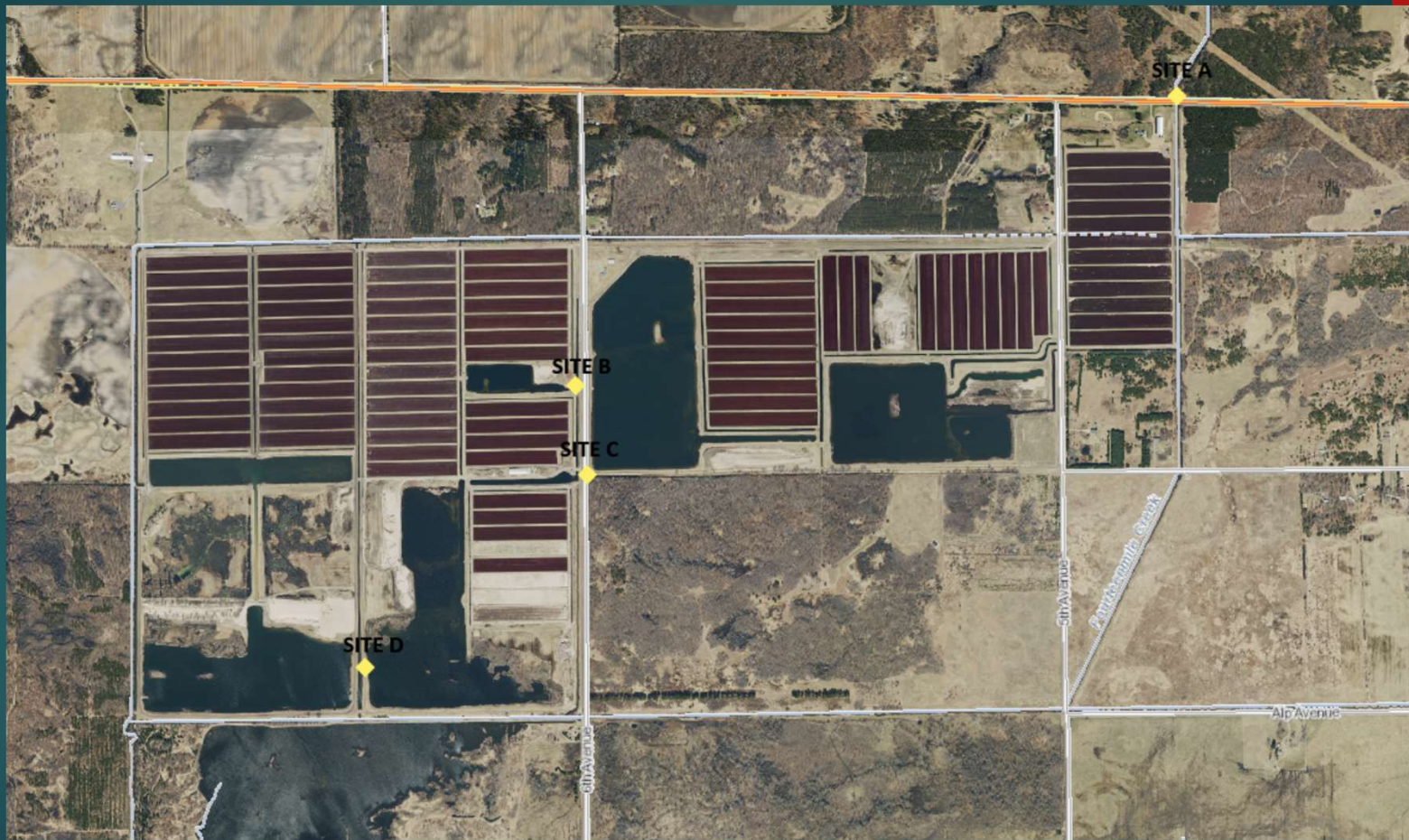


# New AIS – Flowering Rush

## A big ask!

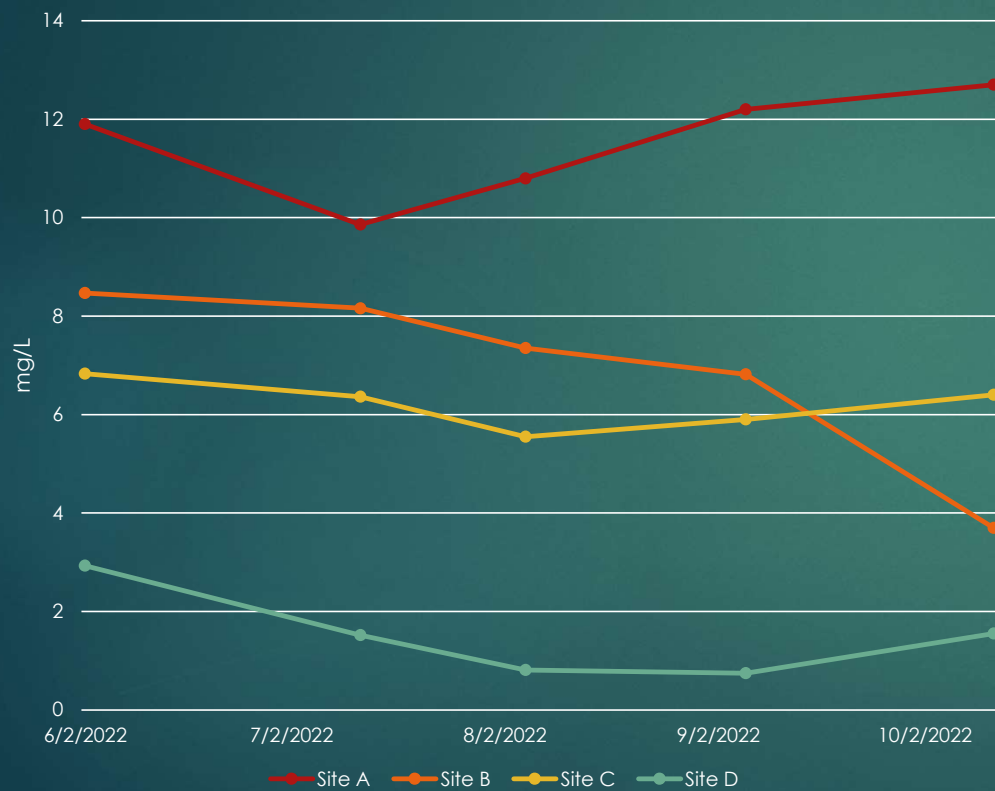


# Nutrient Reduction in Cranberry Bogs



# Denitrification in the Reservoirs!

Nitrate & Nitrite (mg/L)



Average Nitrate & Nitrite



# Other Stuff We Don't Have Time For

- ▶ Marathon County Staff Position
- ▶ Several Grant Applications in the Basin
- ▶ Emerging New Bureau of Ag and Water Quality
- ▶ Monitoring
- ▶ Possible Research with UW Madison and UW Green Bay at Denite Site
- ▶ EPPIC being EPIC
- ▶ Reservoir Balancing



